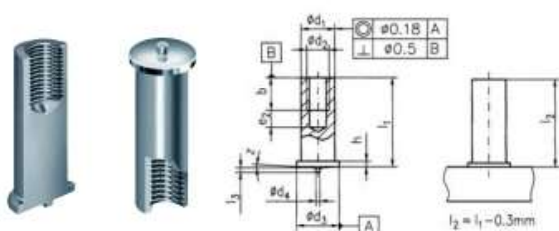


### Tapped pads Type IT



$d_1$ $\pm 0.1$	$d_2$	$l_1$ $+ 0.6$	$b$ $+ 0.5$	$s_1$ min.	$d_3$ $\pm 0.2$	$d_4$ $\pm 0.08$	$l_2$ $\pm 0.05$	$h$	$l_3$ $\pm 1$	$z$
Dia. 5	M3	6-30	5	2.5	6.5	0.75	0.8	0.8	= $l_1$	3*
Dia. 6	M3	8-30	6	3	7.5		0.8			
Dia. 6	M4	8-30	6	3	7.5		0.8			
Dia. 7.1	M5	10-30	7.5	3	9		0.85			

Thread depth b for l, 6-8 mm = 4 mm  
 Dia. 6 M3 according to DIN EN ISO 13918: applies only to steel (4.8) copper plated.

**Recommended power units:** CD 1501, CD 2301, CD 3101, CDM 2401, CDM 3201, SCD 3201  
**Recommended welding guns:** C 08, CA 08  
**Recommended automatic welding guns/heads:** PAH-1, KAH 412, KAH 412 LA

**Materials:** Steel (4.8) copper plated, 1.4301/03 (A2-50), EN AW-ALMg3, CuZn37 (Ms63)

Dimensions	Material and ID number		
	<b>Steel (copper plated)</b> $\mu = 0.18$ Rp0.2 = 340 N/mm <sup>2</sup>	<b>1.4301 (A2-50)</b> $\mu = 0.18$ Rp0.2 = 210 N/mm <sup>2</sup>	<b>ALMg3</b> $\mu = 0.18$ Rp0.2 = 170 N/mm <sup>2</sup>
IT 3x5x6	31-35-006	32-35-006	34-35-006
IT 3x5x7	31-35-007	32-35-007*	34-35-007*
IT 3x5x8	31-35-008	32-35-008	34-35-008
IT 3x5x10	31-35-010	32-35-010	34-35-010
IT 3x5x12	31-35-012	32-35-012	34-35-012*
IT 3x5x15	31-35-015	32-35-015	34-35-015*
IT 3x5x16	31-35-016*	32-35-016	34-35-016
IT 3x5x20	31-35-020	32-35-020	34-35-020*
IT 3x5x25	31-35-025	32-35-025	34-35-025*
IT 3x5x30	31-35-030*	32-35-030*	34-35-030*
IT 4x6x8	31-46-008	32-46-008	34-46-008*
IT 4x6x10	31-46-010	32-46-010	34-46-010
IT 4x6x12	31-46-012	32-46-012	34-46-012
IT 4x6x15	31-46-015	32-46-015	34-46-015
IT 4x6x16	31-46-016*	32-46-016	34-46-016*
IT 4x6x20	31-46-020	32-46-020	34-46-020*
IT 4x6x25	31-46-025	32-46-025	34-46-025*
IT 5x7,1x10	31-57-010	32-57-010	34-57-010*
IT 5x7,1x12	31-57-012	32-57-012	34-57-012*
IT 5x7,1x15	31-57-015	32-57-015	34-57-015*
IT 5x7,1x16	31-57-016*	32-57-016	34-57-016*
IT 5x7,1x20	31-57-020	32-57-020	34-57-020*
IT 5x7,1x25	31-57-025	32-57-025*	34-57-025*
IT 5x7,1x30	31-57-030*	32-57-030*	34-57-030*
IT 6x8x10	31-68-010*	32-68-010	34-68-010*
IT 6x8x12	31-68-012	32-68-012	34-68-012*
IT 6x8x14	31-68-014*	32-68-014	34-68-014*
IT 6x8x15	31-68-015*	32-68-015	34-68-015*

\* articles available upon request